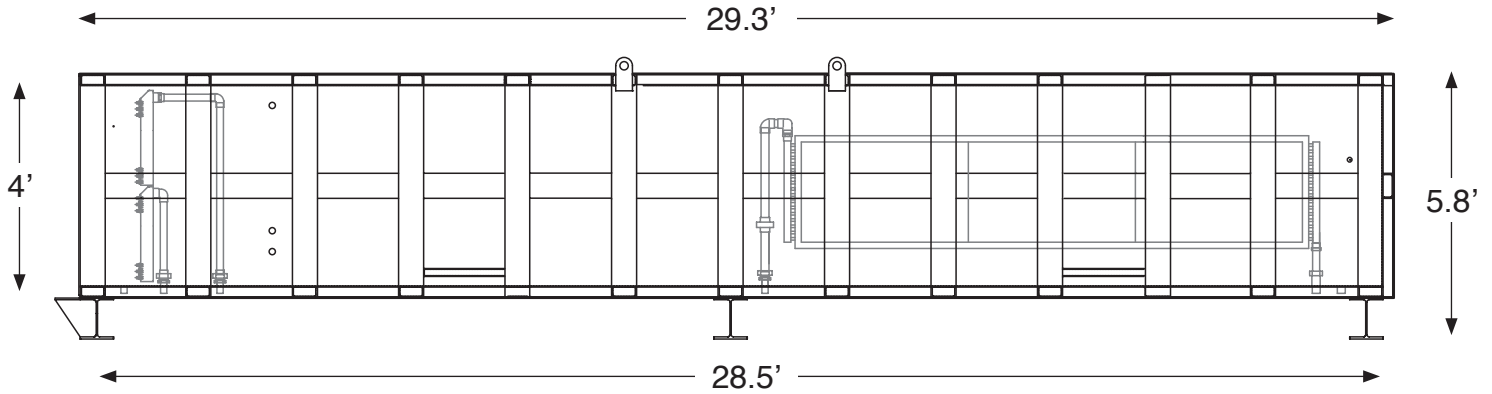


Model VK2.5M: Specifications



Specifications

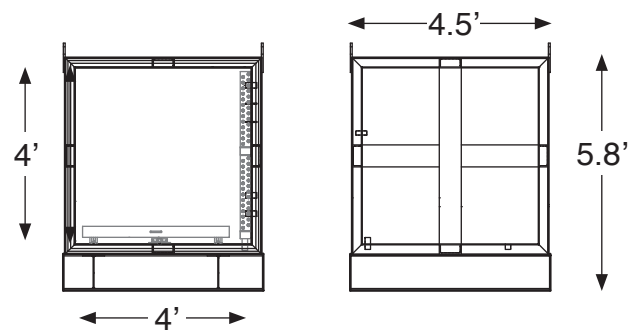
| | |
|------------------------------------|-------------|
| Interior Width | 4' |
| Interior Height | 4' |
| Interior Length | 28.5' |
| Clear Plate Length | 26' |
| Plate Width | 40" |
| Exterior Width | 4.5' |
| Exterior Height | 5.8' |
| Exterior Length | 29.3' |
| Ext. Length (Incl.Rails and Winch) | 57.5' |
| Shipping Weight | 18,850 lbs |
| Combined Service Entrance | 460V 20A |
| Boiler Input Requirement | 95,000 BTUs |
| Minimum Cooling Requirement | 10 Tons |
| Number of Plates | 18 |

Projections

| | |
|--------------------------------|------------|
| BFT per layer (8/4) | 173.3 |
| Layers per Load | 17 |
| Total BFT per Load | 2,946 |
| Drying Time (Hard Maple) | 6 Days |
| Loads per Month | 6 |
| Total BFT per Month (Net) | 17,676 |
| Total BFT per Year | 212,112 |
| Electrical Usage per Load (\$) | \$20.47 |
| Electrical Usage per Year | \$1,473.84 |
| Cost of Electricity per BFT | \$0.006 |

Energy Requirements

| | |
|------------------------------|-------------|
| Electricity per Load | 335.6 kW |
| Cost of kW per Load | \$20.47 |
| BTU per Load | 5,527,433 |
| Avg. BTU/Hour | 76,770 |
| Vacuum Pump Elec. Usage | 460V / 7.6A |
| Hot Water Pump Usage | 460V / 2.6A |
| CT Pump Usage | 115V / 5.8A |
| Water Circulation Pump Usage | 115V / 4.5A |
| CT Fan Motor Usage | 230V / 2.2A |



Note: Projections and Energy Requirements based on drying Hard Maple.