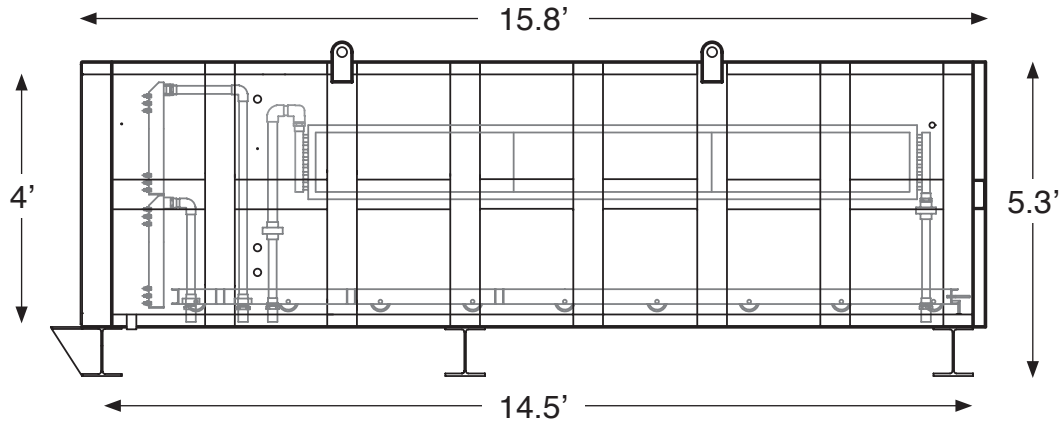


# Model VK3.0M: Specifications



## Specifications

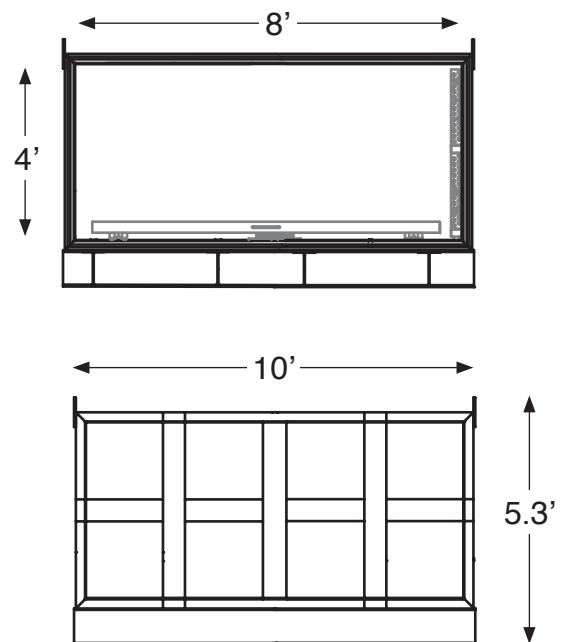
Interior Width	8'
Interior Height	4'
Interior Length	14.5'
Clear Plate Length	13'
Plate Width	80"
Exterior Width	10'
Exterior Height	5.3'
Exterior Length	15.8'
Ext. Length (Incl.Rails and Winch)	33.5'
Shipping Weight	16,700 lbs
Combined Service Entrance	460V 20A
Boiler Input Requirement	90,000 BTUs
Minimum Cooling Requirement	6 Tons
Number of Plates	36

## Projections

BFT per layer (8/4)	173.4
Layers per Load	17
Total BFT per Load	2,948
Drying Time (Hard Maple)	6 Days
Loads per Month	4
Total BFT per Month (Net)	11,792
Total BFT per Year	141,504
Electrical Usage per Load (\$)	\$31.36
Electrical Usage per Year	\$1,505.28
Cost of Electricity per BFT	\$0.01

## Energy Requirements

Electricity per Load	522.6 kW
Cost of kW per Load	\$31.36
BTU per Load	2,763,716
Avg. BTU/Hour	38,385
Vacuum Pump Elec. Usage	460V / 7.6A
Hot Water Pump Usage	460V / 1.4A
CT Pump Usage	115V / 2.5A
Water Circulation Pump Usage	115V / 4.5A
CT Fan Motor Usage	230V / 2.2A



**Note:** Projections and Energy Requirements based on drying Hard Maple.