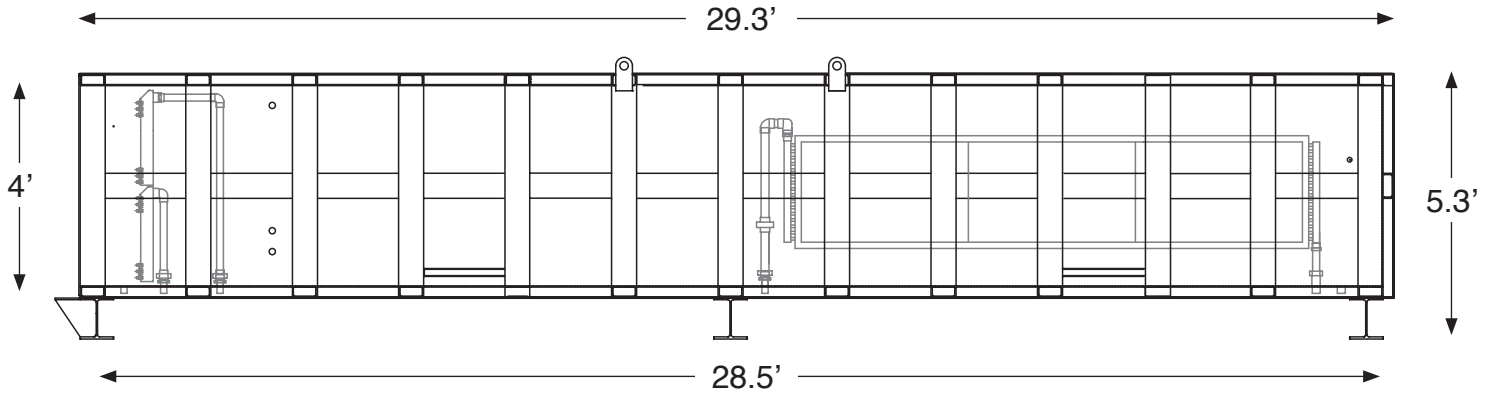


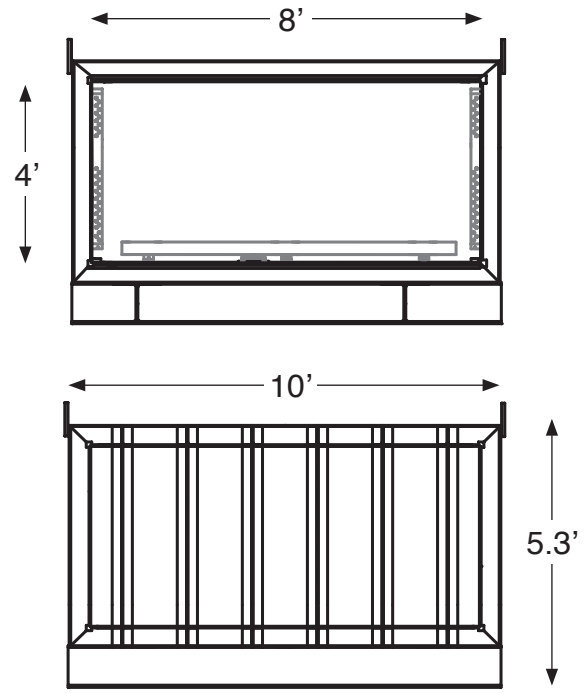
# Model VK5.0M: Specifications



Specifications	
Interior Width	8'
Interior Height	4'
Interior Length	28.5'
Clear Plate Length	26'
Plate Width	40"
Exterior Width	10'
Exterior Height	5.3'
Exterior Length	29.3'
Ext. Length (Incl.Rails and Winch)	57.5'
Shipping Weight	37,350 lbs
Combined Service Entrance	460V 20A
Boiler Input Requirement	150,000 BTUs
Minimum Cooling Requirement	10 Tons
Number of Plates	36

Projections	
BFT per layer (8/4)	346.6
Layers per Load	17
Total BFT per Load	5,892
Drying Time (Hard Maple)	6 Days
Loads per Month	4
Total BFT per Month (Net)	23,568
Total BFT per Year	282,816
Electrical Usage per Load (\$)	\$40.94
Electrical Usage per Year	\$1,965.12
Cost of Electricity per BFT	\$0.006

Energy Requirements	
Electricity per Load	671.2 kW
Cost of kW per Load	\$40.94
BTU per Load	11,054,866
Avg. BTU/Hour	76,770
Vacuum Pump Elec. Usage	460V / 7.6A
Hot Water Pump Usage	460V / 2.6A
CT Pump Usage	115V / 5.8A
Water Circulation Pump Usage	115V / 4.5A
CT Fan Motor Usage	230V / 2.2A



**Note:** Projections and Energy Requirements based on drying Hard Maple.